

# TrakLine™ Fold High Performance Door

Rite-Hite Doors offers the TrakLine Fold Door for your interior and exterior openings.

For exterior doorways and larger interior openings, get the TrakLine Fold Door from Rite-Hite Doors. Its rapid operating speed and automatic closing allow personnel and equipment to move through quickly for improved productivity. V-Flex™ Curtain Release System allows the curtain to separate from flexible track upon impact to protect personnel, cargo and equipment. The durable curtain stabilizers provide excellent wind resistance. The substantial seal saves energy costs.

## Fast opening and closing speed

Opening at 40" per second (1 m/sec) helps improve your operating efficiency.

## Innovative V-Flex™ Curtain Release System

This helps curtain to withstand impact, minimizing damage and downtime.

## Communication

Rite-Hite Doors has a series of light communication products to help reduce common collision accidents between forklifts and pedestrians. LED Countdown, LED Pre-Announce and LED Virtual Vision available.

## Simple, low maintenance design

With no heavy bottom bars, reversing edges or coil cords.

## Substantial seal

Helps provide environmental separation and weather protection.

## Operates in high winds

With fold-up design and horizontal stabilizers.

## Breakaway option

Two-way breakaway is standard with one-way breakaway optional for the full opening clearance.



More than just sensors and data, the Opti-Vu™ platform monitors equipment, captures events, synchronizes vital information and facilitates data-driven behavioral and process change (subscription & additional hardware required).



Graphic User Interface (GUI)

# Specifications

## Speed

Opens and closes up to 40"/sec (1 m/sec)

## Size

**Minimum** – 5'0" w x 7'0" h (1525 mm x 2135 mm)

**Maximum** – 16'0" w x 16'0" h (4876 mm x 4876 mm)

## Bottom edge

Lightweight bottom enclosed in fabric curtain. Door releases upon impact and automatically refeeds into the track. No junction box or coil cords are attached to bottom edge.

## Curtain material

Curtain made of 25 oz. PVC coated polyester fabric. Standard curtain colors: blue and gray. Optional heat-sealed oval vision panels.

## Side frames

Side frames, 14" (355 mm) projection x 5" (127 mm) wide, are formed 14 gauge steel with black polyurethane paint and black corrugated polyethylene covers. Flexible track is 5" (127 mm) wide and is constructed of heavy-duty black polyester fabric. For two-way breakaway, flexible track is 5" (127 mm) in opening on each side. For one-way breakaway, additional 5 3/8" (136 mm) of side clearance is required for track (10 3/8" (263 mm) total per side). Auto re-feed mechanism constructed of polyethylene material.

## Electrical requirements

**Three-Phase** – 208V, 230V, 415V (50Hz), 460V, 575V

## Sealing

Fabric top seal. Fabric loop seals bottom edge at the floor.

## Roller tube

4" (101 mm) diameter, 13 gauge steel tube mounted on two precision self-aligning flange bearings.

## Drive system

Shaft mounted direct drive gearbox with integral 1 HP 1650 rpm motor/brake, controlled by the i-COMM™ 3 Digital Controller.

## Graphic User Interface (GUI)

Industry's only 7" (178 mm) LCD touch screen interface that provides increased safety by allowing an individual to simply access the control box settings without wearing the necessary PPE often required for accessing a live electrical panel.

## Control box

- » i-COMM™ 3 Digital Controller, variable frequency drive.
- » Pre-wired and factory tested.
- » Standard fiberglass NEMA 4X.

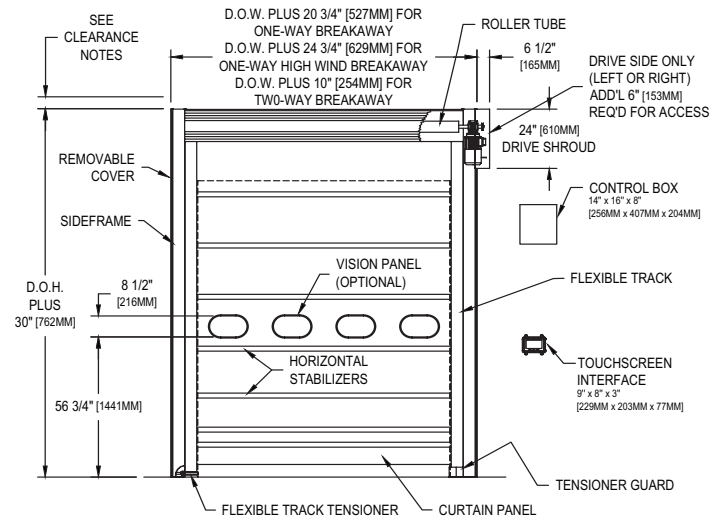
## Safety features

Flexible track breakaway capability helps protect against impact damage. Fabric curtain design addresses entrapment concerns. Two internally mounted reversing photo eyes continuously monitor the door opening.

## Limited warranty

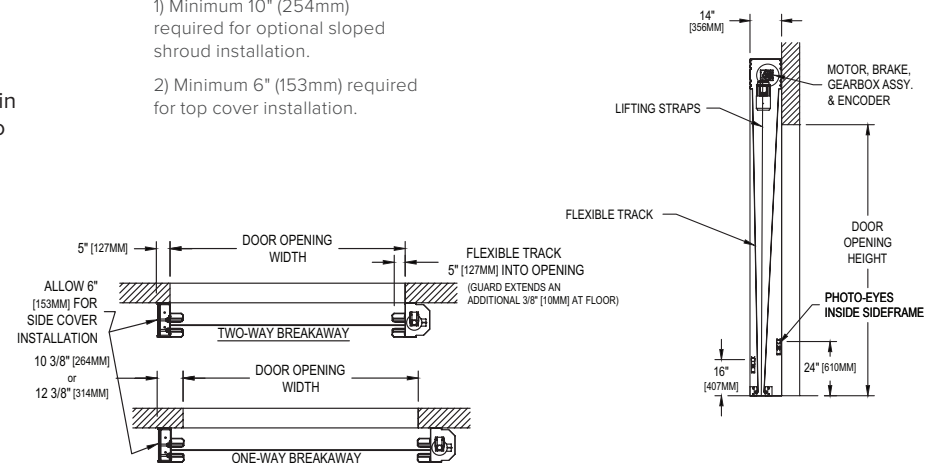
Five (5) Year for motor, brake and gearbox.  
Two (2) Year on all mechanical and electrical parts.  
One (1) Year labor.

## TRAKLINE™ FOLD DOOR



### Clearance Notes:

- 1) Minimum 10" (254mm) required for optional sloped shroud installation.
- 2) Minimum 6" (153mm) required for top cover installation.



D20TFSS0121G1

8900 North Arbon Drive  
Milwaukee, WI 53223, USA

P 414-355-2600 (800-456-0600)

F 414-355-9248

Rite-Hite®, TrakLine™, V-Flex™, i-COMM™ and Opti-Vu™ are trademarks of the Rite-Hite Holding Corporation. Rite-Hite products may be covered by one or more U.S. Patents with other U.S. and foreign patents pending. Rite-Hite reserves the right to make product improvements without prior notice. Manufactured by: Rite-Hite Industrial Door Corporation and Rite-Hite Digital Solutions.

[www.ritehite.com](http://www.ritehite.com)