



# Amarr® Rolling Sheet Commercial Doors

[www.amarr.com](http://www.amarr.com)

## SELF-STORAGE DOORS

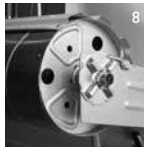
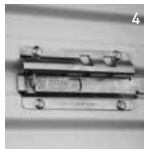


Perfect for most storage facilities, Amarr self-storage doors offer excellent performance and reliability at an economical price. These easy-to-install doors are a popular choice among DIY installers of storage sheds and building projects requiring a secure opening. All models are available in sizes starting as small as 3' wide.

### Amarr 5101, 5151, 5161 SELF-STORAGE DOORS

#### Technical Features

1. 26-gauge galvanized steel curtain (Amarr 5161 is 24 ga)
2. Super Durable Polyester paint provides years of fade resistance and film integrity
3. Clear acrylic coated galvanized steel bottom bar with full width steel angle
4. Exterior dual lock assembly provides for two padlocks
5. Heavy-duty galvanized steel guides hot dipped for maximum strength and rust resistance
6. 9-1/2" drums are totally enclosed by the galvanized steel barrel assembly
7. Steel bearing shaft support
8. Adjustable tensioning device



## LIGHT-DUTY SHEET DOORS

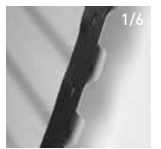
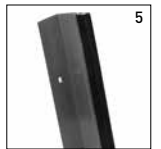
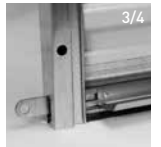


The Amarr light-duty commercial sheet door is an excellent choice for projects requiring value. The enclosed barrel assembly allows this door to fit into spaces with low headroom requirements. The Amarr light-duty commercial sheet door is designed to be economical without sacrificing performance, craftsmanship, or aesthetics.

### Amarr 5501 LIGHT-DUTY SHEET DOORS

#### Technical Features

1. 26-gauge galvanized steel curtain
2. Super Durable Polyester paint provides years of fade resistance and film integrity
3. Clear acrylic coated galvanized steel bottom bar with full width steel angle
4. Dual galvanized steel slide bolt locks attached to the bottom bar
5. Heavy-duty galvanized steel guides hot dipped for maximum strength and rust resistance
6. Heavy-duty nylon strapping reduces friction and ensures smooth and quiet operation
7. 9-1/2" drums are totally enclosed by the galvanized steel barrel assembly
8. Steel bearing shaft support
9. 16-gauge wall mounting brackets
10. Reduced drive chain hoist standard for doors over 10' wide or 10' high



	Amarr 5101	Amarr 5151	Amarr 5161
CURTAIN STEEL THICKNESS	26 ga	26 ga	24 ga
DRUM/BARREL SIZE	9.5"	9.5"	9.5"
MAXIMUM WIDTH	10'	10'	8'8"
MAXIMUM HEIGHT	10'	12'	12'
GUIDE DEPTH	1.6"	1.6" or 2.3"	3"
GUIDE GAUGE	18 ga	18 ga	12 ga
WIND LOAD RATED	No	Yes	Yes
WINDLOCK TYPE	n/a	Steel	Steel
MIAMI-DADE WL APPROVAL	No	No	Yes

	Amarr 5501
CURTAIN STEEL THICKNESS	26 ga
DRUM/BARREL SIZE	9.5"
MAXIMUM WIDTH	12'
MAXIMUM HEIGHT	14'
GUIDE DEPTH	2.3"
GUIDE GAUGE	16 ga
WIND LOAD RATED	No
WINDLOCK TYPE	n/a
MIAMI-DADE WL APPROVAL	No

## HEAVY-DUTY SHEET DOORS

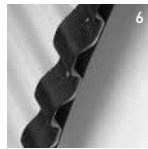
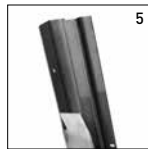


The heavy-duty line of Amarr commercial sheet doors are engineered for door openings with more demanding applications. These doors are typically found on warehouse docks with up to 18' wide openings. The combination of heavy-duty sheet door features and the reduced labor requirement due to ease of install, make these doors an affordable choice for most projects.

### Amarr 5601 HEAVY-DUTY SHEET DOORS

#### Technical Features

1. 26-gauge galvanized steel curtain
2. Super Durable Polyester paint provides years of fade resistance and film integrity
3. Clear acrylic coated galvanized steel bottom bar with full width steel angle
4. Dual galvanized steel slide bolt locks attached to the bottom bar
5. Heavy-duty galvanized steel guides hot dipped for maximum strength and rust resistance
6. Heavy-duty nylon strapping reduces friction and ensures smooth and quiet operation
7. 12" enclosed spiral barrel
8. Steel bearing shaft support
9. 12-gauge wall mounting brackets
10. Reduced drive chain hoist standard for doors over 10' wide or 10' high



	Amarr 5601
CURTAIN STEEL THICKNESS	26 ga
DRUM/BARREL SIZE	12"
MAXIMUM WIDTH	18'
MAXIMUM HEIGHT	18'
GUIDE DEPTH	2-1/4" up to 12' w / 3" 12'1" - 18' w
GUIDE GAUGE	16 ga up to 12' w / 12 ga 12'1" - 18' w
WIND LOAD RATED	No
WINDLOCK TYPE	n/a
MIAMI-DADE WL APPROVAL	No

## HEAVY-DUTY WIND LOAD SHEET DOORS

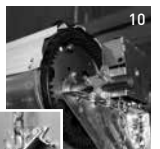
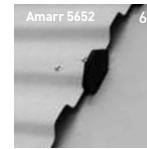
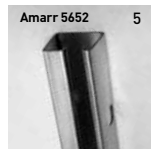


Manufactured to protect property and products in storm prone areas, the line of Amarr heavy-duty wind load certified sheet doors has a variety of models to fit your wind load certification needs, including Miami-Dade. The smooth operation of the nylon windlocks also makes the 5652 an ideal option for most oversized commercial applications.

### Amarr 5652, 5651, 5661 HEAVY-DUTY WIND LOAD SHEET DOORS

#### Technical Features

1. 26-gauge galvanized steel curtain
2. Super Durable Polyester paint provides years of fade resistance and film integrity
3. Clear acrylic coated galvanized steel bottom bar with full width steel angle
4. Dual galvanized steel slide bolt locks provide for two padlocks and added security
5. Heavy-duty galvanized steel guides hot dipped for maximum strength and rust resistance
6. Nylon windlocks on the Amarr 5652 provide wind load protection without sacrificing ease of operation
7. Steel windlocks on the Amarr 5651 and Amarr 5661 provide maximum wind load protection in extreme weather locations
8. Steel bearing shaft support
9. 12-gauge wall mounting brackets
10. Reduced drive chain hoist standard for doors over 10' wide or 10' high



	Amarr 5652	Amarr 5651	Amarr 5661
CURTAIN STEEL THICKNESS	26 ga	26 ga	24 ga
DRUM/BARREL SIZE	12"	12"	12"
MAXIMUM WIDTH	18'	20'	12'
MAXIMUM HEIGHT	14'	14'	20'
GUIDE DEPTH	2"	4"	4"
GUIDE GAUGE	14 ga	12 ga	12 ga
WIND LOAD RATED	Yes	Yes	Yes
WINDLOCK TYPE	Nylon	Steel	Steel
MIAMI-DADE WL APPROVAL	No	No	Yes

**COLORS** Actual paint colors may vary from samples shown.

**Standard**



**Specialty\***



\*Price upcharge applies

**WARRANTY**

Products guaranteed to be free from defects in workmanship and materials for a period of 1 year from date of factory shipment. There is a limited 25-year warranty on the paint and finish.

**Our Philosophy.** Since 1951, we have successfully raised the standards of quality, value, and dependability in the garage door industry. Today, with the same promise of individual attention and great value for all our customers, we remain committed to offering Amarr products and services that raise those standards even higher.

Your Local Amarr Dealer:

**Entrematic**

165 Carriage Court  
Winston-Salem, NC 27105  
800.503.DOOR  
www.amarr.com



Entrematic and Amarr as words and logos are trademarks owned by Entrematic Group AB or companies within the Entrematic Group.

Door specifications and technical data subject to change without notice.

Entrematic products may be the subject of one or more U.S. and/or foreign, issued and/or pending, design and/or utility patents.

©Entrematic Group AB 2019. All rights reserved.  
Printed in USA Form #6120419/9M/GVS

**OTHER COMMERCIAL DOORS AVAILABLE**



Rolling Slat



Steel & Aluminum Sectional



KnockOut

